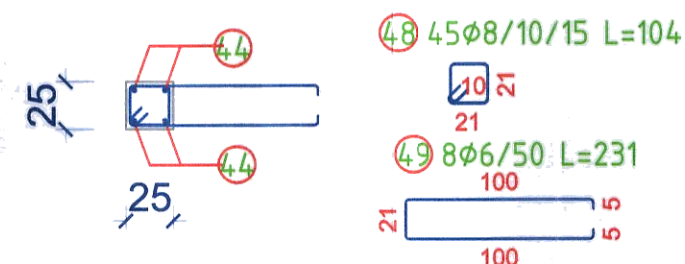
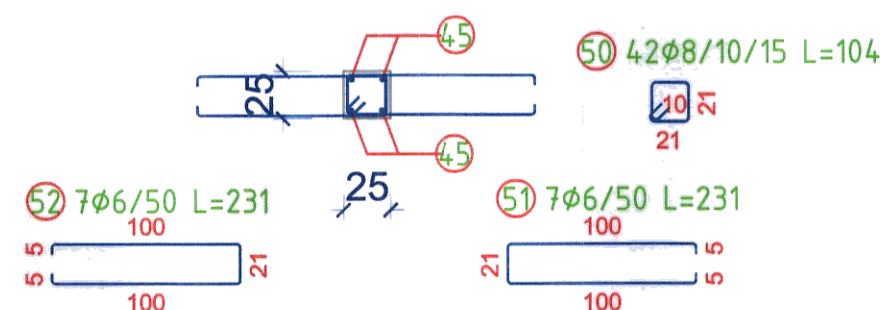


| POSITION | N. BARS | φ [mm] | L [cm] | TOT L. [m] | WEIGHT [kg] | CODE | PATTERN [cm] (to the ext. boundary) |
|---------------|---------|--------|--------|------------|-------------|------|-------------------------------------|
| 44 | 4 | 14 | 560.0 | 22.40 | 27.06 | 212 | |
| 45 | 4 | 14 | 517.0 | 20.68 | 24.98 | 212 | |
| 46 | 4 | 14 | 480.0 | 19.20 | 23.19 | 212 | |
| 47 | 4 | 14 | 445.0 | 17.80 | 21.50 | 212 | |
| 48 | 45 | 8 | 104.0 | 46.80 | 18.49 | 595 | |
| 49 | 8 | 6 | 231.0 | 18.48 | 4.10 | 454 | |
| 50 | 42 | 8 | 104.0 | 43.68 | 17.25 | 595 | |
| 51 | 7 | 6 | 231.0 | 16.17 | 3.59 | 454 | |
| 52 | 7 | 6 | 231.0 | 16.17 | 3.59 | 414 | |
| 53 | 39 | 8 | 104.0 | 40.56 | 16.02 | 595 | |
| 54 | 6 | 6 | 231.0 | 13.86 | 3.08 | 454 | |
| 55 | 6 | 6 | 231.0 | 13.86 | 3.08 | 414 | |
| 56 | 37 | 8 | 104.0 | 38.48 | 15.20 | 595 | |
| 57 | 6 | 6 | 231.0 | 13.86 | 3.08 | 454 | |
| 58 | 5 | 6 | 231.0 | 11.55 | 2.56 | 414 | |
| TOTAL WEIGHT: | | | | | 186.77 | | |

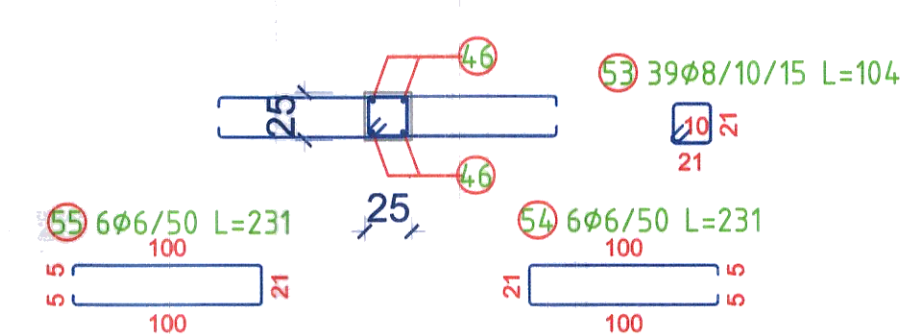
S8 (25x25 cm)
- sectiune -



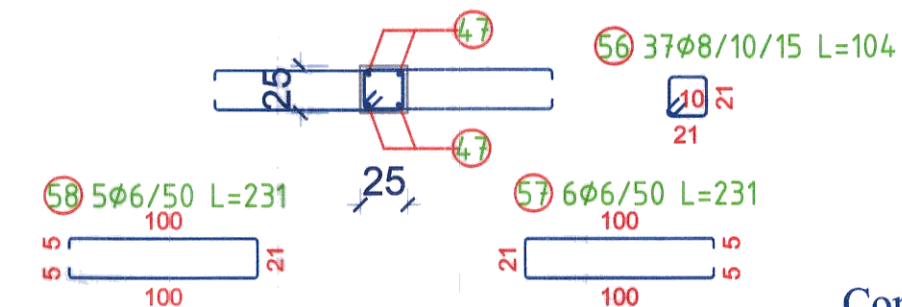
S7 (25x25 cm)
- sectiune -



S6 (25x25 cm)
- sectiune -



S5 (25x25 cm)
- sectiune -



MATERIALE:

- Beton:

- C16/20 in stalpi, centuri.

- Otel beton:

- PC52, OB37.

CLASA BETON

C16/20 XC1 CEM II A-S 32.5R(min. 260kg/mc) A/C:0.60

Conform P100-2013

Tc = 0,70s; ag = 0,25g

CLASA DE IMPORTANTA: III

CATEGORIA DE IMPORTANTA: C



| | | | | |
|---------------------------------------|--|---|--|---------------|
| S.C. ARHIAMAS STRUCTURI DESIGN S.R.L. | | Beneficiar: SPITALUL DE RECUPERARE BRADET | | Pr: 138 |
| PROIECTAT ing. Gheorghe PINTILIE | | CONSTRUCTIE SALA VESTIARE PERSONAL SI CIRCUIT SEPARARE TRANSPORT LENJERIE | | Data: 2022 |
| DESEANAT ing. Gheorghe PINTILIE | | COMUNA BRADULET, SAT BRADETU, JUD. ARGES | | Pl. nr: R17r1 |
| | | Stalpi 25x25cm - vedere 3-3 | | Scara: |